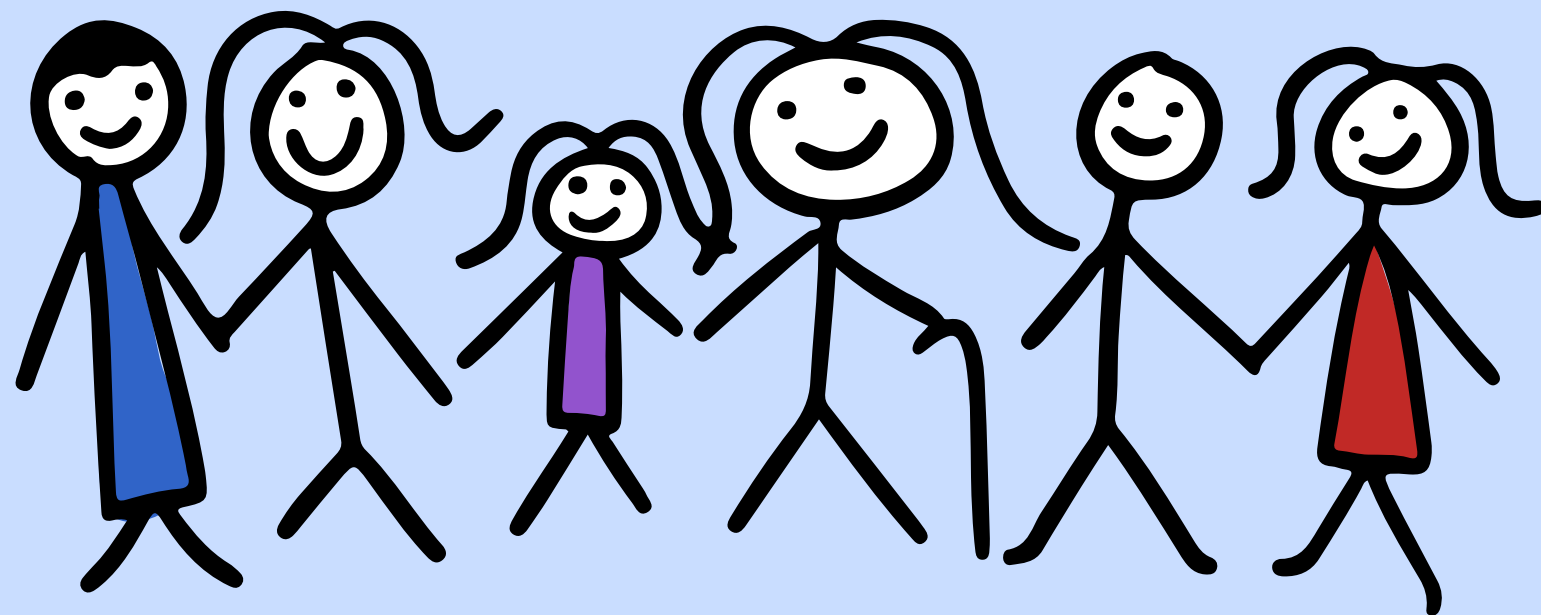


Watership Down Health and Rural West Primary Care Network (PCN) supporting you



Our practice is working with Tadley Medical Partnership as part of a Primary Care Network and the following teams are making a difference already. This explains who they are and what they are doing to strengthen our care offer. Our vision is to work with our communities, share best practice and improve outcomes.

Pharmacy Team

Maddie, Zara, Hafeeza,
Alison and Beatrice

- We help with medication queries
- We ensure your hospital discharge is reconciled with your records
- We audit our prescribing to ensure we provide safe care
- We monitor 'high risk' medications

Musculoskeletal Team

Jess and Russell

- We help to diagnose and treat any musculoskeletal problems in people over the age of 18

Social Prescribers

Tracey and Stephanie

- We provide support for those people needing help to gain confidence, self-manage and reconnect with their communities

Wellbeing Team

Paul, Lisa and Jo

- Paul works with the Duty team supporting people who need to talk about their mental health on that day
- Lisa offers counselling for those with mental health conditions
- Jo offers structured coaching conversations

Proactive Care Team

Alyssa and Gemma

- We help to support people who are housebound, working closely with our community teams

Care Coordinators

Rachel and Victoria

- We help people to live with their Long Term conditions and we help to organise timely reviews and checks

